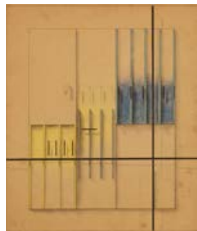


Front Office



Untitled, New York, May 23, 1936, 1936
Oil on canvas
36 x 23 inches
Signed lower left: Ch. Biederman / May 23/36



Untitled, March 1947, 1947
Mixed media on paper
25 1/8 x 22 3/4 inches



String Relief, New York, June 1936, 1936
Nails, string, metal rope cleats, cork bottle tops,
and paint on panel
52 x 28 x 3 inches



Untitled, Paris, January 1937, 1937
Gouache and ink on paper
18 x 14 inches
Signed and dated at lower right: Biederman 1/37



Untitled, Paris, February 1937, 1937
Gouache and ink on paper
18 x 14 inches
Signed at lower left: Ch. Biederman
Inscribed and dated at lower right: Paris 2/37



Untitled Steel Abstraction, 1983
Stainless Steel
24 x 11 1/8 x 3 1/2 inches
10 1/4 x 10 1/4 x 2 3/4 inches (base)
Inscribed beneath base: © Charles Biederman
1983

Reception Gallery



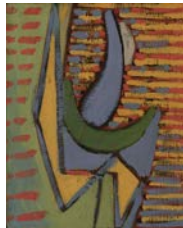
Model for #14, Paris, 1937
Painted wood
16 1/4 x 13 1/4 x 3 1/2 inches
Inscribed on verso: #14 / Paris 5/37



Untitled, New York, December 1935, 1935
Oil on board
12 1/4 x 7 1/4 inches
Signed and dated lower left: Ch. Biederman 12
1935



Untitled, New York, May 1935, 1935
Oil on canvas
14 1/4 x 11 3/16 inches
Signed and dated on verso across canvas: Ch.
Biederman / 5.35
Inscribed on stretcher: 1935 / N.Y. / N.Y.



Untitled, New York, January 1935, 1935
Oil on canvas
14 5/16 x 11 1/4 inches
Signed and dated twice on verso across canvas:
Ch. Biederman / 1935 / 1935



#40, 1/36, 1936
Oil on wood panel
17 x 14 1/2 x 1 1/4 inches
Inscribed on verso: 40
Inscribed lower center: 36 Ch. Biederman



Untitled, 1937 (Model), 1937
Painted wood
22 3/16 x 18 1/4 inches
Signed, dated, and inscribed on verso: 1937
(Model) / Charles Biederman



Structural Relief, New York #5, March 1938, 1938
Painted wood
22 3/8 x 20 1/2 x 5 1/4 inches



#3, Untitled, 1982-1984
Painted aluminum
42 x 32 x 9 inches

Main Gallery



#10, USA, 1937-1983
Painted wood
28 1/2 x 33 1/2 x 3 inches



No. 31, 1952-73 R22, 1952-1973
Painted aluminum
41 1/2 x 33 1/2 x 6 inches
Inscribed on verso: Charles Biederman / made in
USA / all right reserved



#78, 1952-1978
Painted aluminum
31 1/2 x 27 x 5 inches
Inscribed on verso: all rights reserved / made in
USA / copyright Charles Biederman / 1978



#7, Untitled, 1937-1982
Painted wood
25 x 30 inches x 4 inches



#6, New York, 1938
Painted wood and colored plastic
22 x 17 x 5 inches
Inscribed on verso: 4/1938



Untitled, Paris, May 12, 1937, 1937
Oil on canvas
76 5/8 x 50 1/8 inches
Signed and dated at lower left: Paris 5/12/37
Biederman



Work No. 8, New York, 1938, 1938-1980
Painted wood
34 1/4 x 24 5/8 x 8 inches
Signed and inscribed on the verso: Work, No. 8,
N.Y., 1938 Copyright Charles Biederman 1980



Untitled, New York, August 5, 1936, 1936
Oil on canvas
59 x 41 1/4 inches
Signed, inscribed, and dated at upper left: Ch.
Biederman August 5/36 N.Y.



3/17/1937 Paris #37, 1937
Oil on canvas
38 1/4 x 51 1/2 inches
Signed at lower right: Ch. Biederman /
3/17/1937 Paris



Untitled, New York, August 1936, 1936
Oil on canvas
40 1/4 x 29 1/8 inches
Signed and dated at lower right: Ch. Biederman
8/15/36



Work No. 5, New York, 1937-83, 1937-1983
Stainless Steel
26 1/4 x 16 x 3 1/2 inches
22 1/4 x 13 3/4 x 2 1/2 inches (base)
Inscribed beneath base: © Charles Biederman /
Work No. 5, New York, 1937-1983 / Charles
Biederman