



Menconi +
Schoelkopf

FRIEZE MASTERS

October 9–16, 2020

Joseph Cornell



Joseph Cornell (1903–1972)

Pleiades As Seen With Unaided Eye, 1952–54

Box construction, 10 × 14 × 4 inches

Signed on paper label affixed to verso: Joseph Cornell; also titled on verso: "Pleiades as Seen with Unaided Eye"



Menconi +
Schoelkopf

Joseph Cornell (1903–1972)

An Owl for Ondine, 1954

Box construction, $9\frac{7}{8} \times 6\frac{3}{8} \times 4\frac{1}{2}$ inches

Signed on paper label affixed to verso:

Joseph Cornell; also titled and dated on

verso: "An Owl for ONDINE" / summer

199 544 [sic]



Menconi +
Schoelkopf



Charles Burchfield (1893–1967)

Hemlock in November, 1947–66

Watercolor on joined paper, 42 × 32½ inches

Signed with the artist's monogram and dated
at lower right: CEB / 1947–1966



Menconi +
Schoelkopf

Edward Hopper (1882–1967)

Dune with Green Top, 1930

Watercolor on paper, 15½ × 24½ inches

Signed and inscribed at lower right:

Edward Hopper / Truro

Inscribed on verso: Dune at Truro



Menconi +
Schoelkopf



John Marin (1870–1953)

New York Fantasy, c. 1912

Watercolor on paper, 17¼ × 14½ inches

Inscribed with title on verso: New York / Fantasy



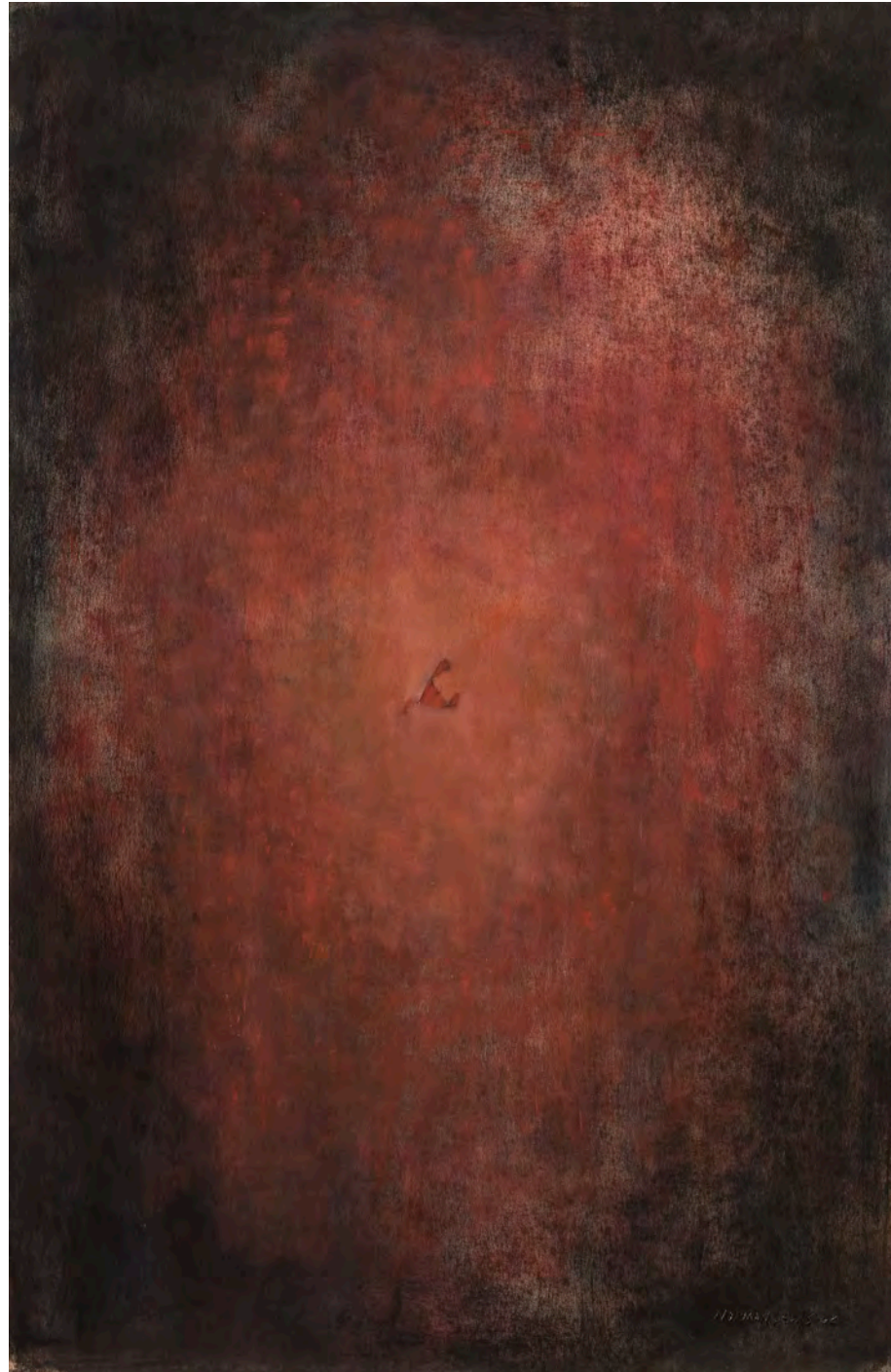
Menconi +
Schoelkopf

Norman Lewis (1909–1979)

Untitled, 1962

Oil on paper, 40³/₈ × 26 inches

Signed and dated at lower right: Norman Lewis 62



Menconi +
Schoelkopf



Robert Motherwell (1915–1991)

Te Quiero, 1973
Acrylic and collage on paper, 49 × 37 inches



Menconi +
Schoelkopf



Lucian Freud (1922–2011)

Pluto, 1988

Etching printed in black, hand-colored
with grey wash on Somerset Satin

White paper, 16½ × 27¼ inches

Signed in pencil at lower right margin:

L.F.; numbered in pencil at lower left

margin: 34/40

Edition no. 34 of 40



Richard Estes



Richard Estes (b. 1932)

Fog Lifting off the Coast of Antarctica, 2007

Oil on board, 14 × 34 inches

Signed and dated at lower right: Richard Estes 2007



Menconi +
Schoelkopf

Richard Estes (b. 1932)

Late Afternoon Tide, Provincetown, 2006

Oil on board, 13½ × 20⅞ inches

Signed and dated at lower right: Richard Estes /
Provincetown [sic.] / 06



Menconi +
Schoelkopf



Richard Estes (b. 1932)

Staten Island Ferry Docking Manhattan, 2008
Oil on board, 23½ × 16 inches



Menconi +
Schoelkopf



FRIEZE MASTERS

October 9–16, 2020

For a full list and prices of works available, click on the link below:

<https://viewingroom.frieze.com/viewing-room/210>



Andrew Schoelkopf
Owner/Principal
+1 914-886-2700
aschoelkopf@msfineart.com



Alana Ricca
Managing Director
+1 203-524-2694
aricca@msfineart.com



Susan Johnson
Director of Research
+1 917-861-8649
sjohnson@msfineart.com



Meghan Ferrucci
Marketing & Communications Manager
+1 518-641-9949
mferrucci@msfineart.com

Menconi + Schoelkopf