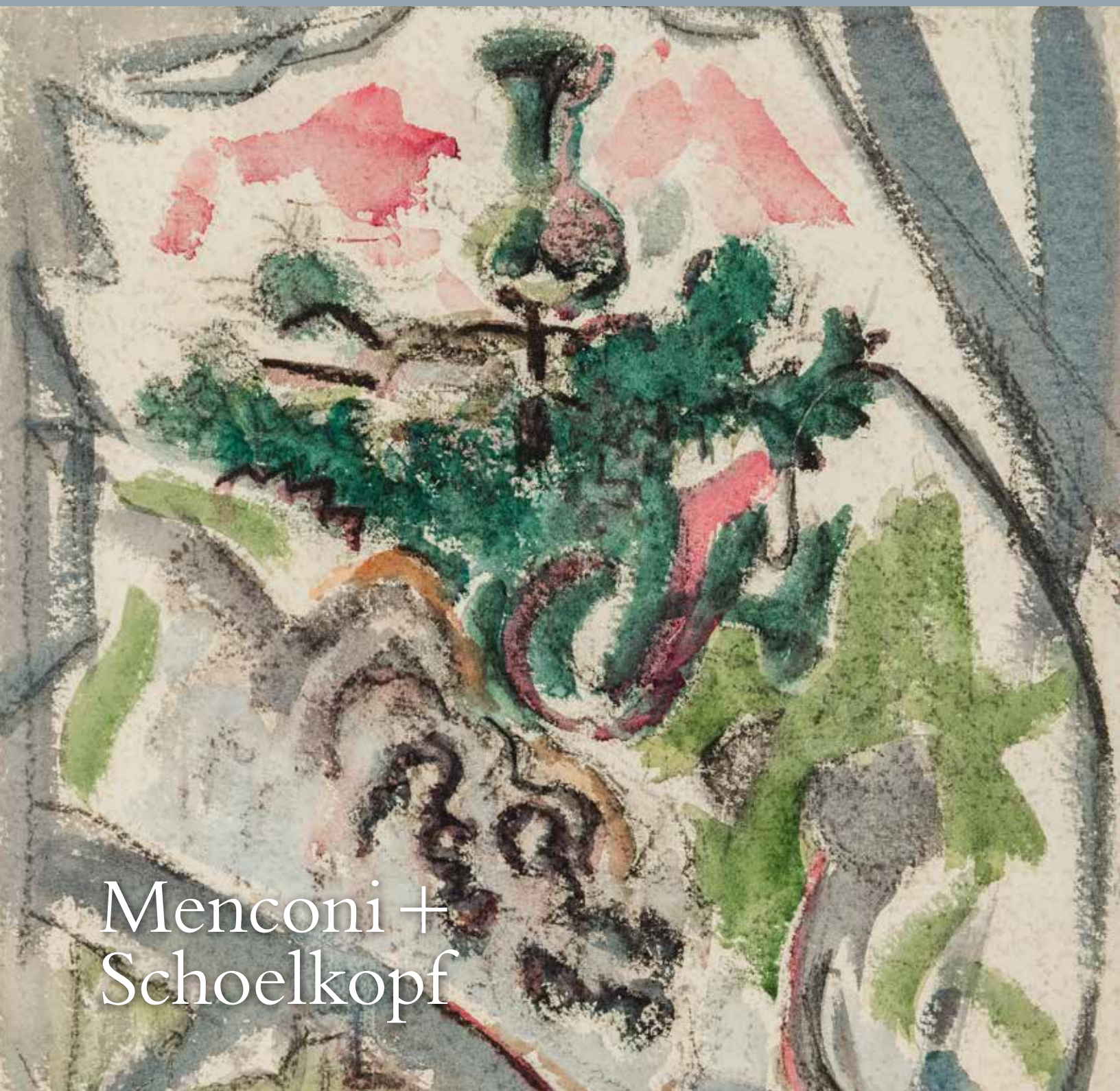


Marin *and* THE CRITICS

Selections at The ADAA Art Show

February 27–March 1, 2020

Booth A2



Menconi +
Schoelkopf





John Marin (1870–1953)

Landscape, 1914

Oil on canvasboard, 8 × 9⁷/₈ inches

PROVENANCE

The artist; to
His estate; to
[Richard York Gallery, New York]; to
William Dean, New York;
Private collection, Philadelphia, Pennsylvania, until the present

RECORDED

Sheldon Reich, *John Marin: A Stylistic Analysis and Catalogue Raisoné*, Vol. II, Tucson, University of Arizona Press, 1970, p. 390, no. 14.33

Menconi +
Schoelkopf



John Marin (1870–1953)

Movement, Foliage, c. 1915
Pencil on board, 10¼ × 12¼ inches
Signed at lower right: Marin

PROVENANCE

The artist; to
His estate, until the present

Menconi +
Schoelkopf





John Marin (1870–1953)

Weehawken Sequence, BY 1916
Oil on canvasboard, 12 × 9 inches

PROVENANCE

The artist; to
His estate, until the present

RECORDED

Sheldon Reich, *John Marin: A Stylistic Analysis and Catalogue Raisonné*, Vol. II, Tucson: University of Arizona Press, 1970, p. 432, no. 16.84, illus.

Menconi +
Schoelkopf



John Marin (1870–1953)

Weehawken Sequence, BY 1916
Oil on canvasboard, 9½ × 12½ inches

PROVENANCE

The artist; to
His estate, until the present

RECORDED

Sheldon Reich, *John Marin: A Stylistic Analysis and Catalogue Raisonné*, Vol. II, Tucson: University of Arizona Press, 1970, p. 441, no. 16.125, illus.

Menconi +
Schoelkopf



John Marin (1870–1953)

Weehawken Sequence, BY 1916
Oil on canvasboard, 9¾ × 12 inches

PROVENANCE

The artist; to
His estate, until the present

RECORDED

Sheldon Reich, *John Marin: A Stylistic Analysis and Catalogue Raisonné*, Vol. II, Tucson: University of Arizona Press, 1970, p. 436, no. 16.104, illus.

Menconi +
Schoelkopf



John Marin (1870–1953)

Weehawken Sequence, BY 1916
Oil on canvasboard, 12 × 9 inches

PROVENANCE

The artist; to
His estate, until the present

RECORDED

Sheldon Reich, *John Marin: A Stylistic Analysis and Catalogue Raisonné*, Vol. II, Tucson: University of Arizona Press, 1970, p. 434, no. 16.95, illus.

Menconi +
Schoelkopf



John Marin (1870–1953)

Weehawken Sequence, BY 1916
Oil on canvasboard, 10 × 14 inches

PROVENANCE

The artist; to
His estate, until the present

RECORDED

Sheldon Reich, *John Marin: A Stylistic Analysis and Catalogue Raisoné*, Vol. II, Tucson: University of Arizona Press, 1970, p. 427, no. 16.63, illus.

Menconi +
Schoelkopf





John Marin (1870–1953)

City Movement, 1925–26

Watercolor on paper, 7 $\frac{7}{8}$ × 9 $\frac{3}{8}$ inches

PROVENANCE

The artist; to

His estate, until the present

RECORDED

Sheldon Reich, *John Marin: A Stylistic Analysis and Catalogue Raisonné*, Vol. II, Tucson: University of Arizona Press, 1970, p. 545, no. 25.19, illus.

Menconi +
Schoelkopf



John Marin (1870–1953)

Downtown, New York, c. 1925
Watercolor on paper, 10 × 7¹/₈ inches
Signed at lower right: Marin

PROVENANCE

The artist; to
His estate, until the present

Menconi +
Schoelkopf



M. Adin



John Marin (1870–1953)

Little Fir Tree, Deer Isle, 1921

Watercolor on paper, 16¾ × 13¼ inches

Signed and dated at lower right: Marin 21

PROVENANCE

The artist; to

His estate, until the present

RECORDED

Sheldon Reich, *John Marin: A Stylistic Analysis and Catalogue Raisonné*, Vol. II, Tucson: University of Arizona Press, 1970, p. 485, no. 21.28, illus.

Menconi +
Schoelkopf



John Marin (1870–1953)

Untitled (Landscape), 1939

Watercolor on paper, 21¼ × 15½ inches

Signed and dated at lower right: Marin 39

PROVENANCE

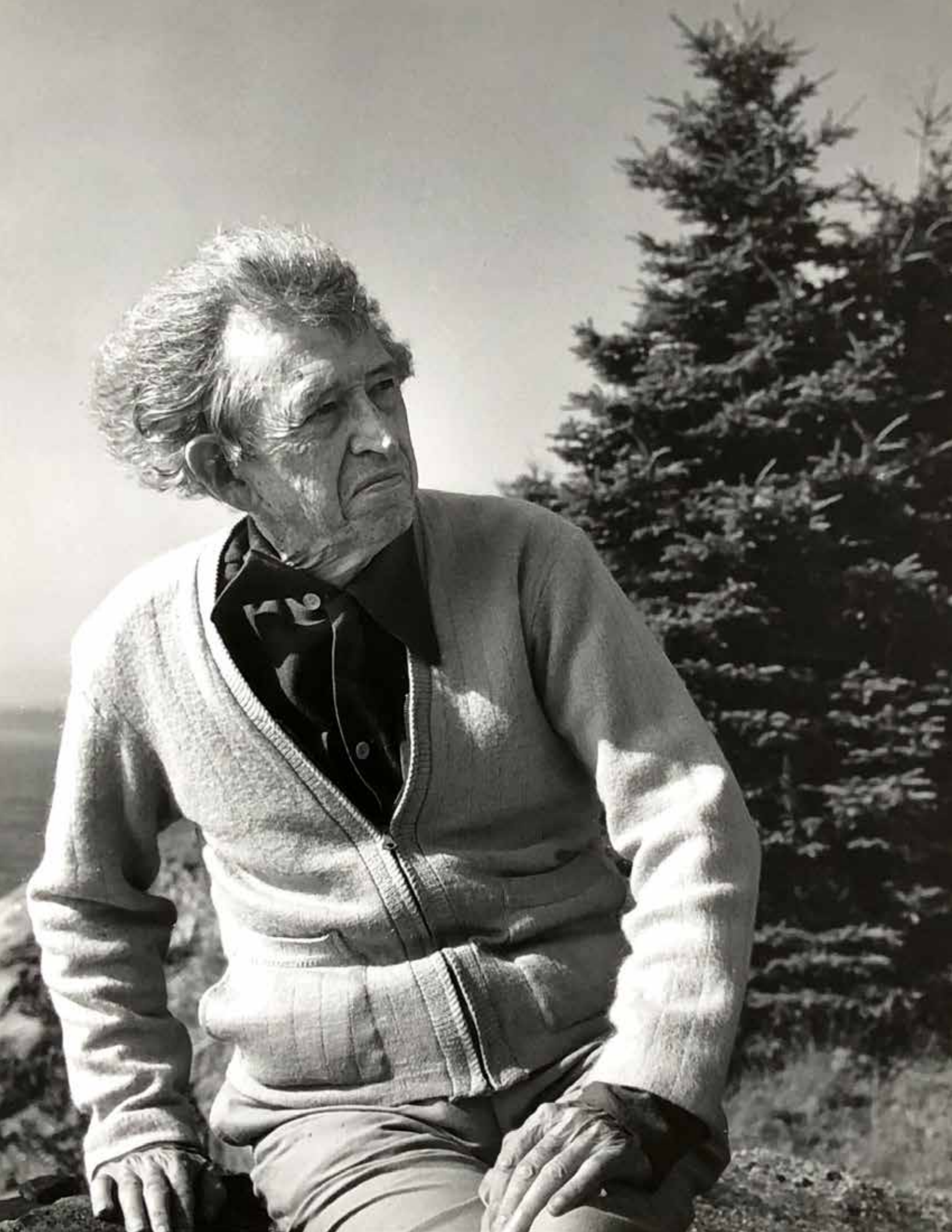
The artist; to

His estate, until the present

RECORDED

Sheldon Reich, *John Marin: A Stylistic Analysis and Catalogue Raisonné*, Vol. II, Tucson: University of Arizona Press, 1970, p. 699, no. 39.19, illus.

Menconi +
Schoelkopf





John Marin (1870–1953)

Movement: Sea Played with Boat Motive, 1947

Oil on canvas, 22 × 28 inches

Signed and dated at lower right: Marin 47

PROVENANCE

The artist; to

His estate, until the present

RECORDED

Sheldon Reich, *John Marin: A Stylistic Analysis and Catalogue Raisonné*, Vol. II, Tucson: University of Arizona Press, 1970, p. 755, no. 47.25, illus.

EXHIBITED

An American Place, New York, *John Marin*, December 8, 1947–January 31, 1948, no. 9

Menconi +
Schoelkopf



John Marin (1870–1953)

Movement in Red and Grey No. 1, 1949

Oil on canvas, 24 × 29 inches

Signed and dated at lower right: Marin 49

PROVENANCE

The artist; to

His estate, until the present

RECORDED

Magazine of Art, October 1950, illus. p. 204 // Sheldon Reich,
John Marin: A Stylistic Analysis and Catalogue Raisonné, Vol. II,
Tucson: University of Arizona Press, 1970, p. 772, no. 49.30, illus.

EXHIBITED

An American Place, New York, *John Marin*, December 19,
1949–February 4, 1950, no. 3 // Detroit Institute of Arts,
Michigan, *John Marin*, 1954, no. 31

Menconi +
Schoelkopf

Marin *and* THE CRITICS

Selections at The ADAA Art Show
February 27–March 1, 2020

Selections at the Gallery
February 24–April 24, 2020

For a full list and prices of works available, click on the link below:

<http://privateview.net/2/29bfadodbb5db3d1a392e5>



Andrew Schoelkopf
+1 914-886-2700
aschoelkopf@msfineart.com



Jonathan Spies
+1 646-334-1043
jspies@msfineart.com



Alana Ricca
+1 203-524-2694
aricca@msfineart.com



Susan Johnson
+1 917-861-8649
sjohnson@msfineart.com

Menconi +
Schoelkopf