

A black and white portrait of a man with dark, curly hair and glasses. He is wearing a dark suit jacket over a dark shirt. He is resting his chin on his right hand, looking directly at the camera with a serious expression. The background is dark and out of focus.

an important exhibition of works by

**N.C. WYETH**

Menconi + Schoelkopf

---

**N.C. Wyeth: Storyteller**  
September 10 – October 25, 2019  
Exhibition Checklist

---



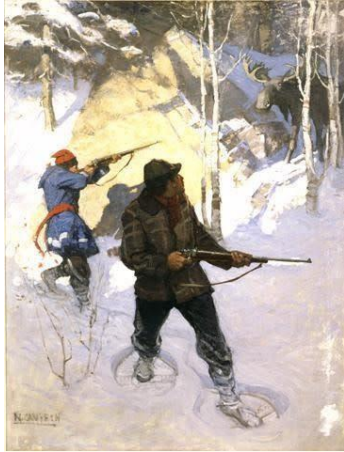
**Newell Convers Wyeth**  
1882-1945

*From the stern to the pilot house  
they danced and struck and  
howled: the one yelling  
venomously, the other whooping  
with gleeful vehemence, 1915*  
oil on canvas  
25 x 34 1/8



**Newell Convers Wyeth**  
1882-1945

*Suddenly the restful quiet of the  
morning was broken by Pablo...  
Gray paused in the middle of a  
sentence and with Morgan and Jo  
started for the gate. Bill dropped  
his paper and got to his feet (left  
side), 1925*  
Signed at lower left: N.C.  
WYETH (underlined)  
oil on canvas  
32 x 32 inches



**Newell Convers Wyeth**  
1882-1945

*Moose Hunting (Moose Shooting)*, 1910/1915  
Signed at lower left: N. C.  
WYETH (underlined); Ketterlinus  
label on stretcher; additional label  
(Knoedler's): No. 52688 Picture /  
HH43 (written in pencil)  
oil on canvas  
42 1/8 x 32 inches



**Newell Convers Wyeth**  
1882-1945

*The lightning blazed out flash upon flash and set the castle on fire (Satan)*, 1916  
Signed at lower right: N.C.  
WYETH (underlined)  
oil on canvas  
40 1/4 x 32 1/4



**Newell Convers Wyeth**  
1882-1945

*Iris*  
oil on canvas  
40 1/8 x 24 inches



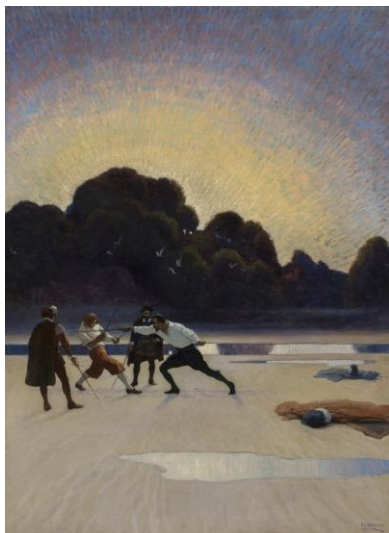
**Newell Convers Wyeth**  
1882-1945

*Caribou Hunters (Popular Magazine, cover illustration), 1909*  
Signed at lower left: N. C.  
WYETH (underlined) / 09;  
further inscribed on reverse of  
canvas, at upper left: (illegible) /  
Popular (underlined); all four  
stretcher keys are marked: PATd.  
/ FEB. 13 / 1883 / JUNE 16 /  
1885 / A. D. S.  
oil on canvas  
38 1/8 x 25 inches



**Newell Convers Wyeth**  
1882-1945

*Wash Day on the Maine Coast (Harbor, Monday Morning; Monday Morning on the Maine Coast; Washday; Port Clyde), 1934*  
Signed at lower right: NC  
WYETH  
Oil on canvas  
48 1/2 x 52 inches



**Newell Convers Wyeth**  
1882-1945

*The Duel on the Beach*, 1920  
Signed at lower right: NC  
WYETH  
Oil on canvas  
40 1/2 x 29 3/4 inches



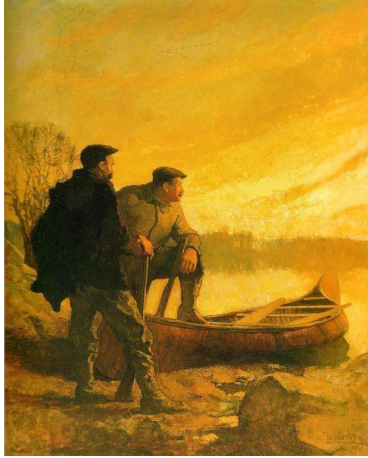
**Newell Convers Wyeth**  
1882-1945

*Indian Spearman (Spearfishing)*,  
1934  
Signed at lower left: NC Wyeth  
Oil on canvas  
37 1/4 x 53 inches



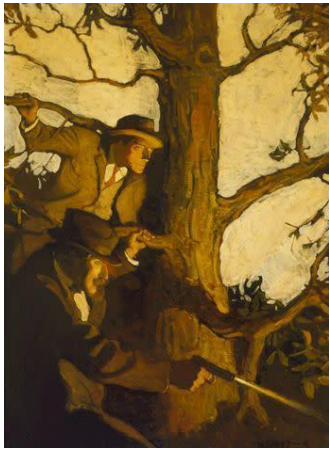
**Newell Convers Wyeth**  
1882-1945

*The Homecoming*, 1945  
Oil on panel  
35 x 26 inches



**Newell Convers Wyeth**  
1882-1945

*Two Hunters and Canoe*, 1911  
Signed and dated at lower right:  
N.C. Wyeth 1911  
Oil on canvas  
46 3/4 x 37 3/4 inches



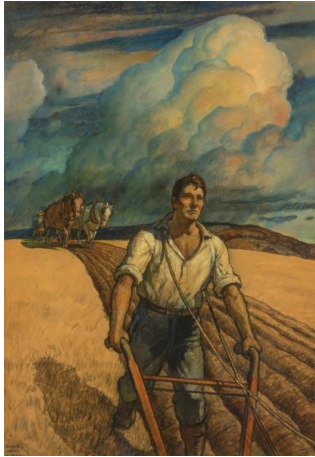
**Newell Convers Wyeth**  
1882-1945

*The Decoy*, 1913  
Signed at lower right: N.C.  
Wyeth  
Oil on canvas  
33 x 24 1/4 inches



**Newell Convers Wyeth**  
1882-1945

*Massasoit*, c. 1945  
Signed and inscribed at lower  
right  
inscribed at lower center / titled  
at lower left  
Charcoal on paper  
35 x 51 inches



**Newell Convers Wyeth**  
1882-1945

*Plowman*, 1944

Inscribed at lower left: ROUGH /  
SKETCH / N. C. WYETH

Charcoal and pastel on paper laid  
down on panel

41 1/2 × 31 1/2 inches